



HS589CR Feed Line Control Unit Switch Assembly Replacement Kit – 230V Single Phase

General Installation Notes:

Make sure that power is disconnected from system prior to servicing.

Installation of this equipment and related OEM equipment should be in accordance with these instructions, OEM's installation instructions and local codes (if applicable). Failure to follow specified instructions may cause damage to equipment and/or personal injury or death.

Take special note of any Warnings or Safety Decals on the equipment and in manuals.

Always wear protective clothing and any applicable Personal Protective Equipment (Safety Glasses and/or Ear Plugs) when working with the equipment.

Discarded materials, equipment and boxes should be recycled in accordance with local and national codes.

Unless otherwise specified, all Feed Delivery Systems (Diameters) are installed similarly.

Note: Switch Assembly is to be wired in accordance with all applicable local and national electrical wiring codes. All wiring sizes and fuse capacities are to be sized according to applicable electrical code specifications or other regulations.

Safety Instructions:

Read all safety messages in this manual and on equipment safety decals. Follow recommended precautions and safe operating practices.

Ground all electrical equipment for safety.

Ground all non-current carrying metal parts to guard against electrical shock.

Always keep safety decals in good condition and replace missing or damaged decals.

Overview:

The GrowerSELECT HS589CR Feed Line Control Unit Switch Assembly Kit is designed to replace broken and obsolete switches that are part of control units for flexible auger feed systems. This switch is used to control the auger drive motor by turning off the power when feed is present and turning on the power when feed has been removed from the control unit housing.

It is a direct replacement for the Chore-Time 6655R Switch Assembly used in the 6560 Control Unit and the 8789 Switch Assembly used in the 24482 Control Unit. If necessary, the diaphragm used in the corresponding Control Unit can be purchased separately.

Diaphragms Sold Separately:

The HS582CRL Large Diaphragm is used in the 6560 Control Unit assembly.

The HS582 Small Diaphragm is used in the 24482 Control Unit assembly.

The sensitivity of the electrical switch is not adjustable.

Contents of the HS589CR KIT:

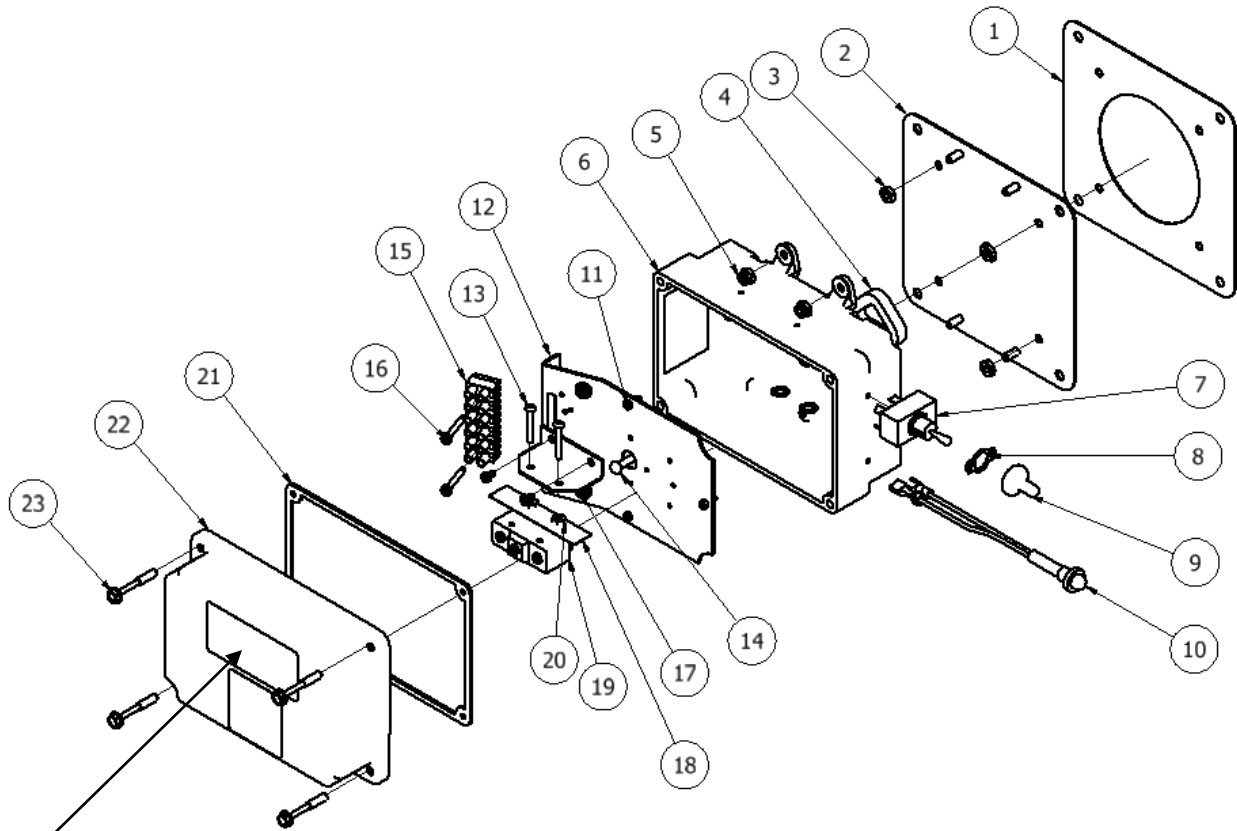
Quantity	Name
1	Switch Assembly Enclosure
1	HS589-8 Mounting Plate
1	HS589CR-2 Seal
4	10-32 Hex Nuts
4	¼-20 Hex Nuts
4	10-32 Lock Nuts
4	#10 Washers

MAXIMUM LOAD RATING: 1 ½ HP @ 230VAC

A red indicator light on the side of the switch housing will illuminate when the diaphragm has been pressed (MOTOR OFF) and the switch has been activated.

The ON/OFF switch is used to enable or disable the Control Unit. **DO NOT USE THIS SWITCH AS DISCONNECTING MEANS FOR SERVICING.**

HS589CR Feed Line Control Unit Switch Assembly Replacement



Safety Decal HSLABEL-008
"Warning Shock Hazard"

REF #	PART #	DESCRIPTION	REF #	PART #	DESCRIPTION
1	HS589CR-2	SEAL	17		SWITCH MOUNT
2	HS589-8	ASSY-PLATE, MOUNT CONTROL BOX	18		FILM, INSULATION SWITCH
3		NUT HEX MACHINE SCREW #10-32	19	EL1052M	SWITCH, SNAPACTION 20A @ 250VAC
4	HS529-45	PLUNGER SEAL	20		NUT HEX MACHINE SCREW #6-32
5		LOCKNUT NYLON INSERT #10-32	21	HS589-3	GASKET, COVER SWITCH HOUSING
6		BOX, SWITCH HOUSING HS589	22		COVER, SWITCH HOUSING
7	EL1011	SWITCH, TOGGLE DPST, 20A @ 250V, 2HP	23		SHOULDER SCREW 10-16 X 1.375" HEX HEAD SELF TAPPING SS
8	EL1082	PLATE, LEGEND, VERTICAL ON-OFF			
9	EL1083	SWITCH BOOT			
10	EL1079	LIGHT, INDICATOR NEON RED			
11		SCREW PHILLIPS - TYPE BT #6-20 x .375"			
12		COMPONENT MOUNT PLATE			
13		SCREW PHILLIPS PAN HEAD #6-32- X 1"			
14		SWITCH PIN, PLUNGER			
15	EL1072	TERMINAL STRIP 6 POSITION 10 AWG MAX			
16		SCREW PHILLIPS TYPE #6-32 X 1"			

1. Installation

The HS589CR is designed to replace two types of switch assemblies used in feed line control units:

- A. The Chore-Time 6655R Switch Assembly on the 6560 Control Unit
- B. The Chore-Time 8789 Switch Assembly on the 24482 Control Unit

A. Replacing 6655R Switch Assembly on 6560 Control Unit

1. (**Figure 1**) illustrates a typical installation example of the HS589 Control Unit Switch Assembly to a 6560 Control Unit.
2. MAKE SURE ALL POWER IS DISCONNECTED FROM THE CONTROL UNIT.
3. Detach the Drop Cone from the Control Unit or remove the Access Door if available in order to reach the Diaphragm.
4. Remove all parts of the old Switch Assembly from the Control Unit. Make sure that the Diaphragm on the inside of the Control Unit does not fall out of place if it is not being replaced.

See Steps 5-6 if replacing the Diaphragm - Otherwise, see Step 7

5. Remove the old Diaphragm from the bottom opening of the Control Unit.
6. Fit the new HS582CRL Diaphragm into the same holes of the Control Unit panel.
7. Discard all parts of the old Switch Assembly and all of the old fasteners that joined the parts to the Control Unit.
8. Place the new Switch Assembly Enclosure on the studs of the HS589-8 Mounting Plate. Fasten the Switch Assembly Enclosure to the HS589-8 Mounting Plate using the four 10-32 lock nuts and four #10 washers supplied.
9. Fit the HS589CR-2 Seal on the studs of the HS582CRL Diaphragm as shown in **Figure 1**.
10. Align the four most outer holes of the HS589-8 Mounting Plate with the four studs of the Large Diaphragm.
11. Bolt the HS589-8 Mounting Plate in place using the ¼-20 Hex Nuts supplied.

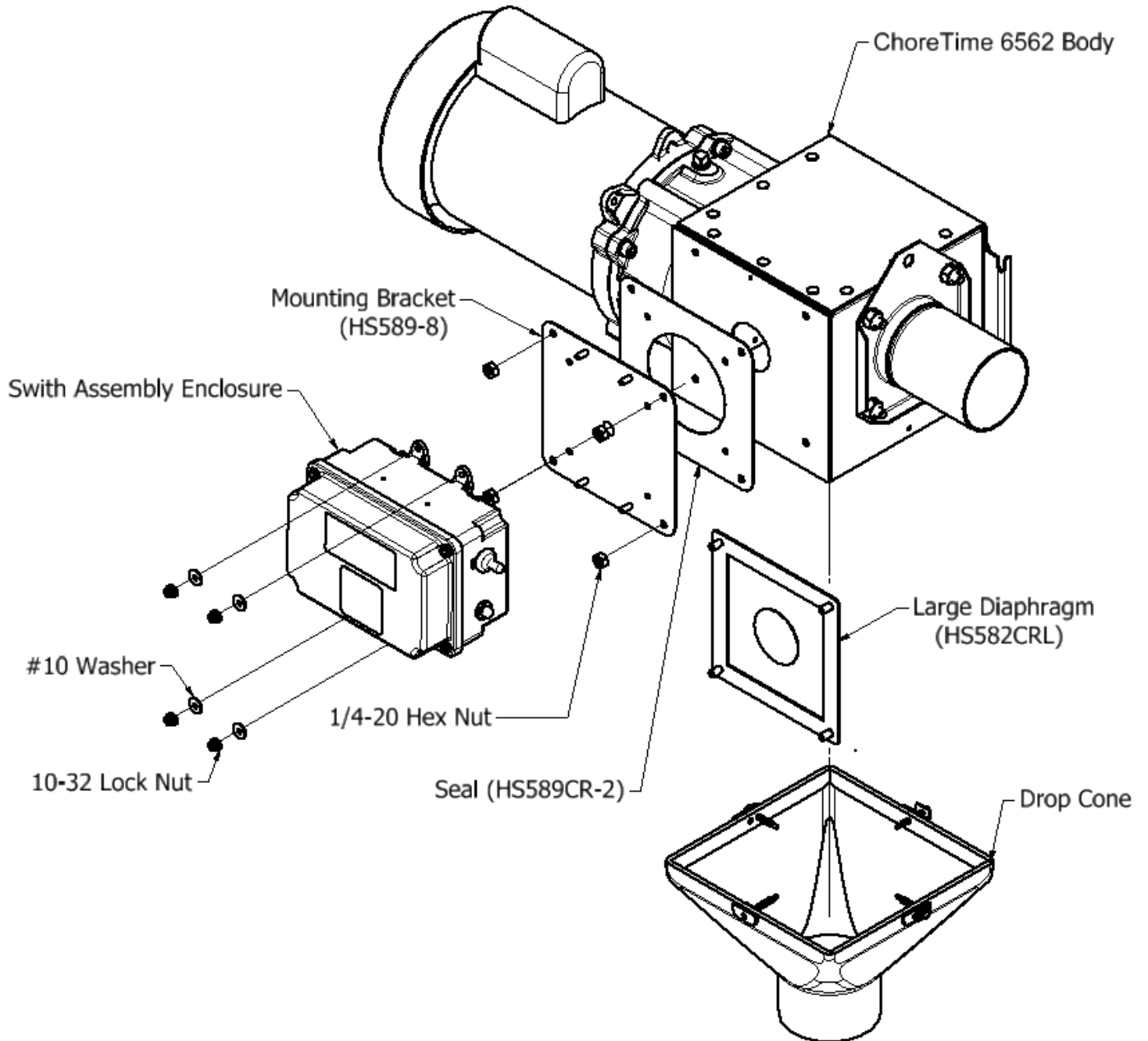


FIGURE 1

B. Replacing 8789 Switch Assembly on 24482 Control Unit

1. (Figure 2) illustrates a typical installation example of the HS589 Control Unit Switch Assembly to a 24482 Control Unit.
2. MAKE SURE ALL POWER IS DISCONNECTED FROM THE CONTROL UNIT.
3. Detach the Drop Cone from Control Unit or open the Access Door if available in order to reach the Diaphragm located on the inside of Control Unit.
4. Remove the four nuts that are securing the old Switch Assembly to the front side of the Control Unit. Make sure the Diaphragm on the inside of the Control Unit does not fall out of place if you are not replacing it.

See Steps 5-6 if replacing the Diaphragm. Otherwise, see Step 7.

5. Remove the old Diaphragm from the bottom opening of the Control Unit.
6. Fit the new HS582 Diaphragm into the same holes of the Control Unit panel.
7. Discard all parts of the old Switch Assembly, the old Seal, and all of the old fasteners that joined the parts to the Control Unit.
8. Fit the HS589CR-2 Seal on the studs of the Diaphragm as shown in Figure 2.
9. Align the four inner holes of the HS589-8 Mounting Plate with the four studs of the Diaphragm.
10. Bolt the HS589-8 Mounting Plate in place using the four 10-32 hex nuts supplied.
11. Place the new Switch Assembly Enclosure on the studs of the HS589-8 Mounting Plate.
12. Fasten the Switch Assembly Enclosure to the HS589-8 Mounting Plate using the four 10-32 lock nuts and four #10 washers supplied.

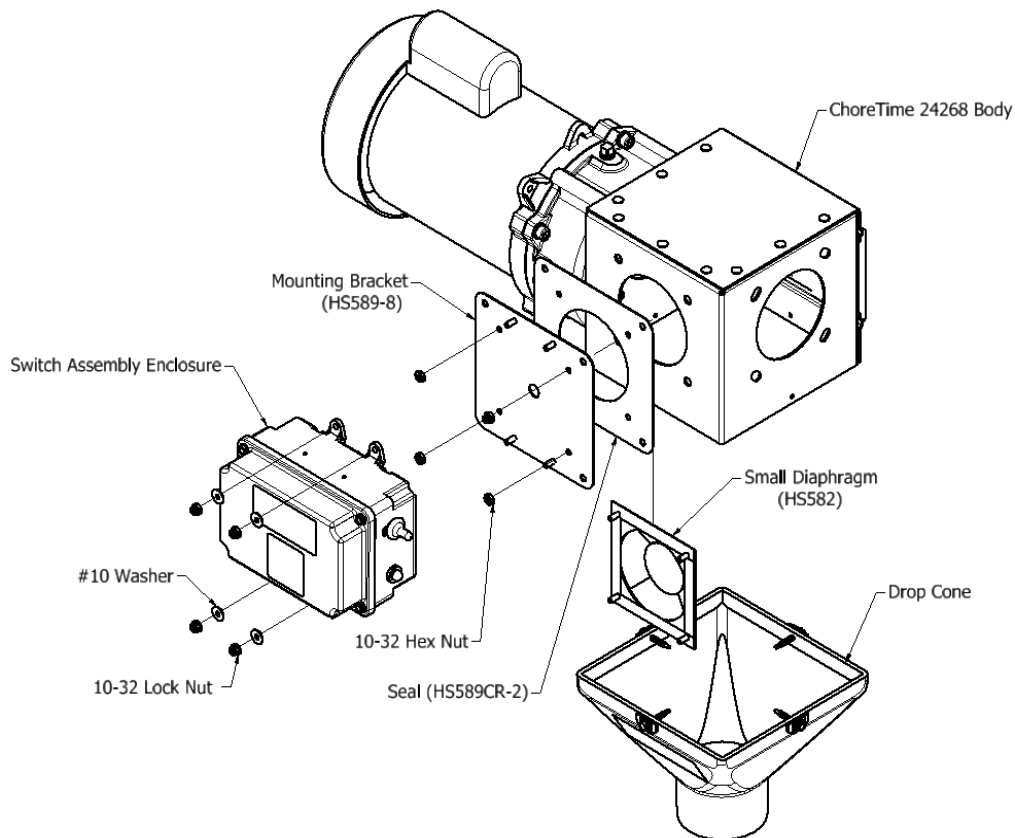


Figure 2

Wiring Instructions

1. The HS589 Control Unit must be hardwired. See (Figure 3) for factory internal wiring diagram.
2. See below instructions Figure 4 and 5 for external wiring for single phase and three phase operation.
3. When connecting wire from equipment to terminal strip, remove no more than ¼” of insulation from end of wire. Be sure there are no stray wire strands before inserting wire into terminal strip. Insert wire into terminal ¼” and tighten terminal strip set screw.
4. When using **Hopper Level Control Switch**, switch should be wired as “Normally Closed” contact.
5. If **No Hopper Level Control Switch** is to be used, Place jumper wire between terminals (5) and (6).
6. Use provided self-tapping screws to provide bonding to Control Unit Switch Assembly and other connected equipment.
7. Pilot indentions are provided and located to allow for sufficient clearance for ½” non-metallic liquid tight strain relief cord connectors. DO NOT USE RIGID CONDUIT.
8. Care should be taken when drilling pilot holes to prevent damage to wires or other components.

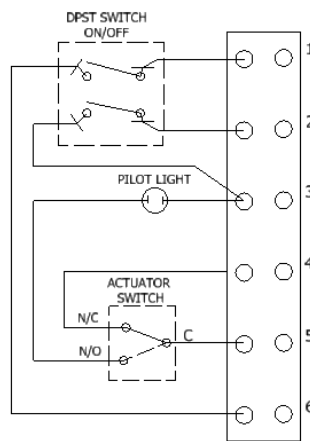


Figure 3

WIRING INSTRUCTIONS FOR SINGLE PHASE – 50/60Hz W/O MOTOR STARTER

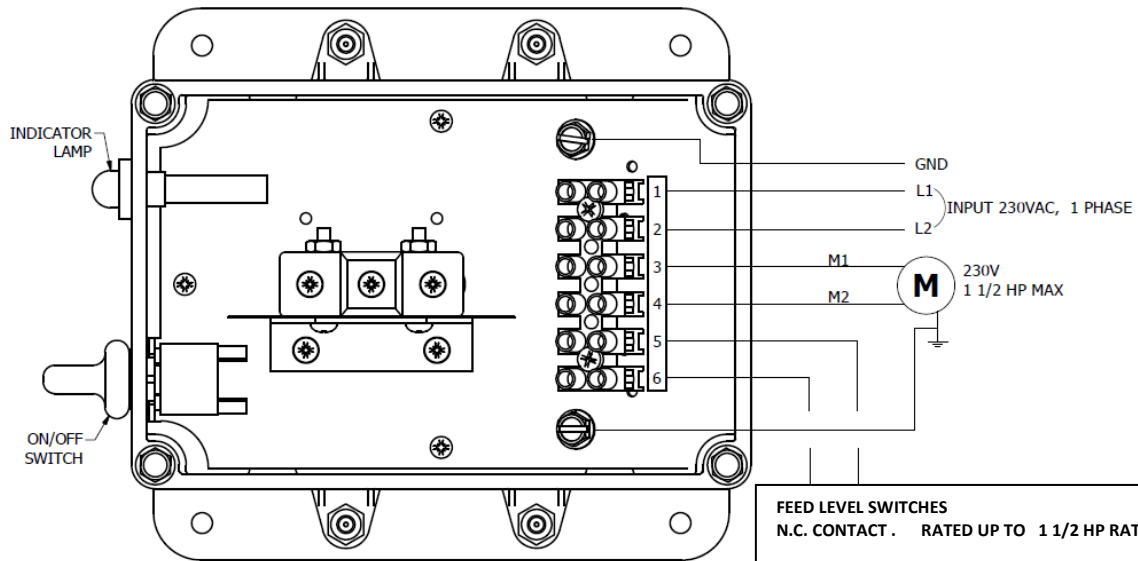


Figure 4

WIRING INSTRUCTIONS FOR THREE PHASE – 50/60Hz WITH MOTOR STARTER

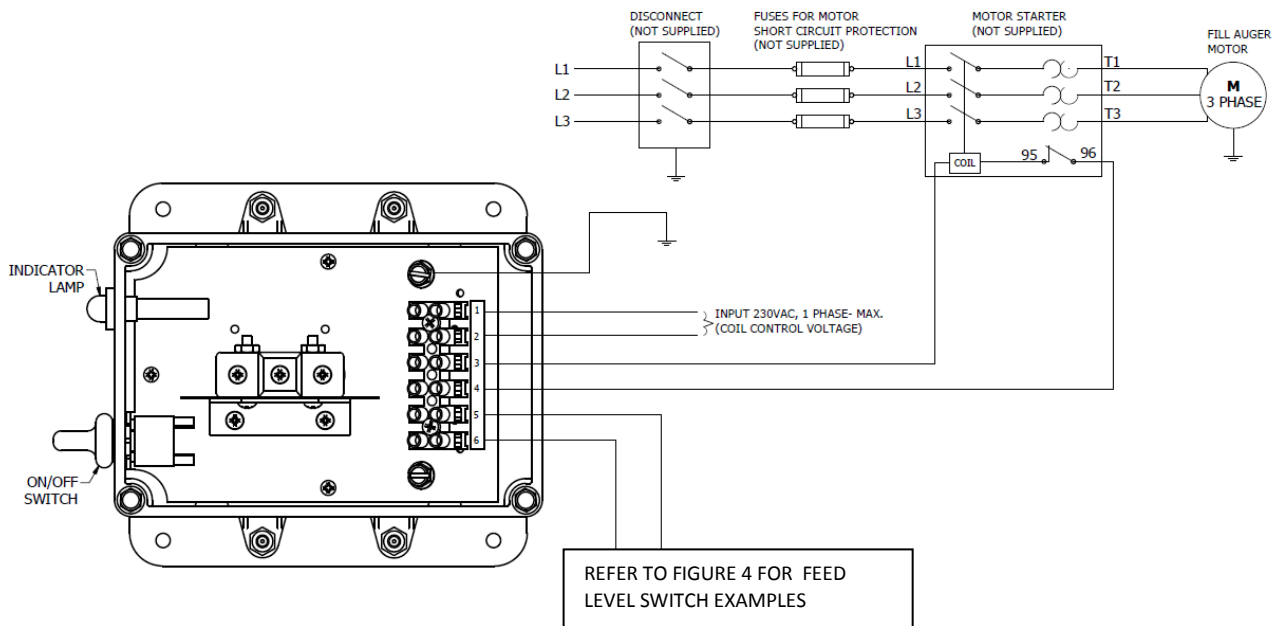
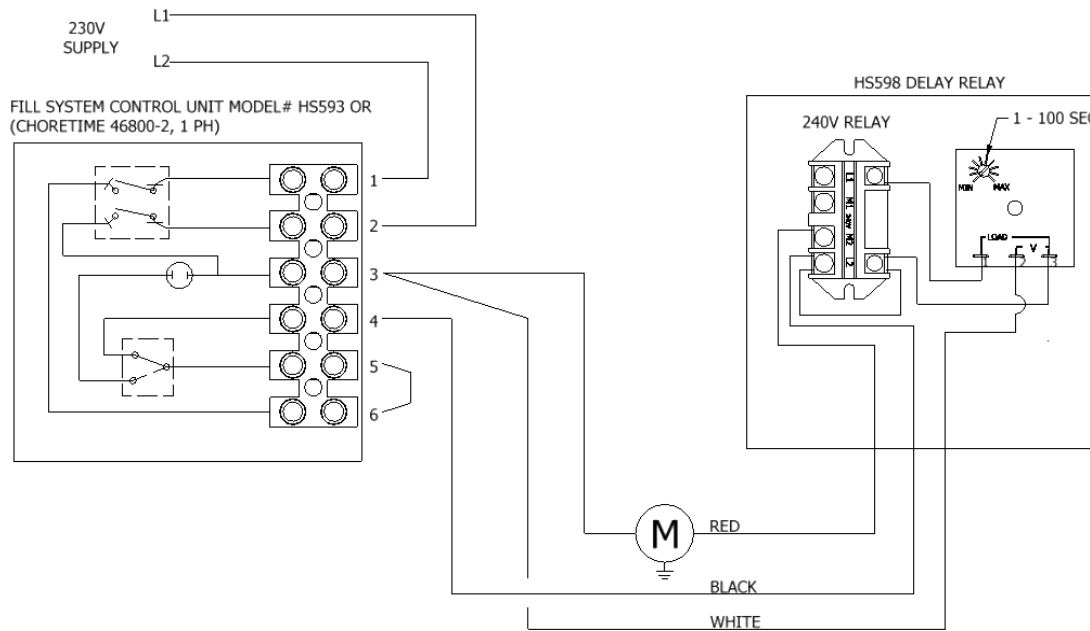
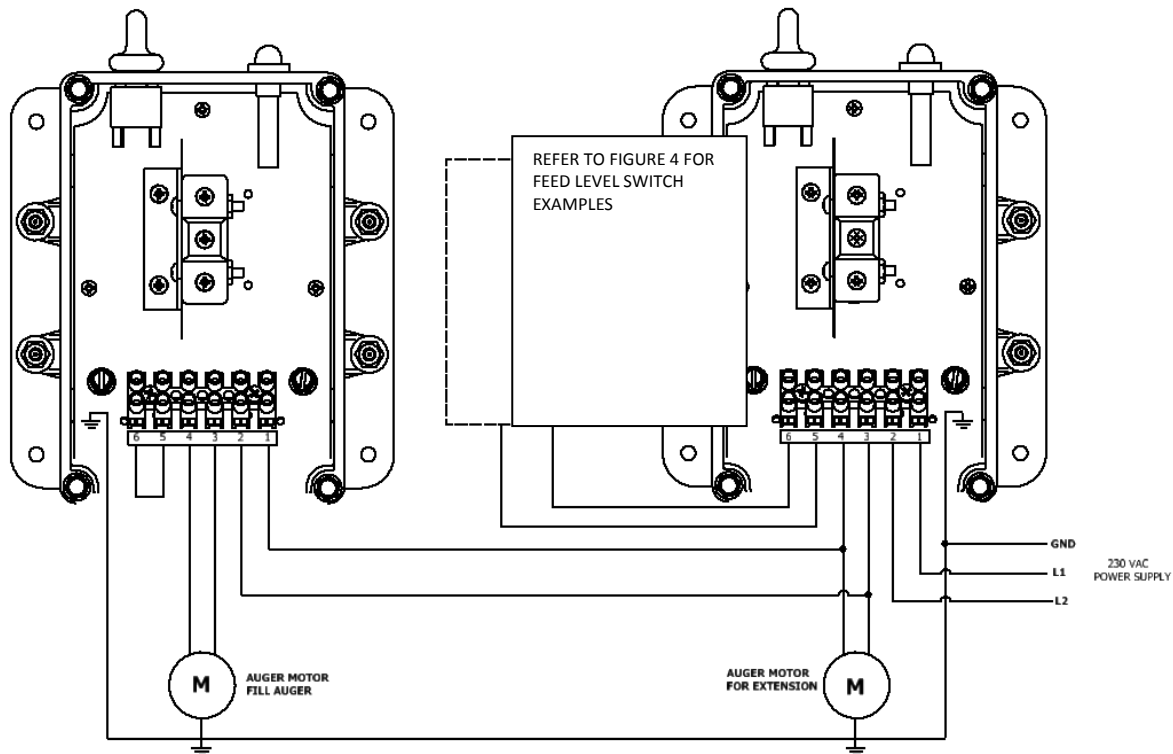


Figure 5

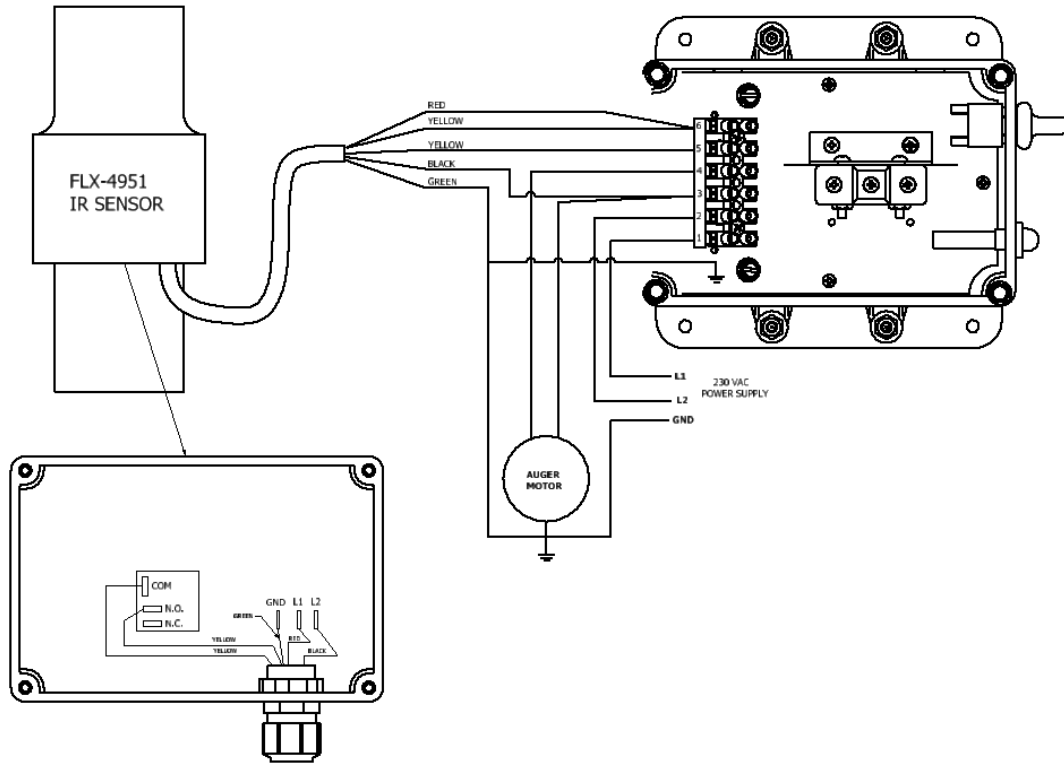
WITH OPTIONAL TIME DELAY:



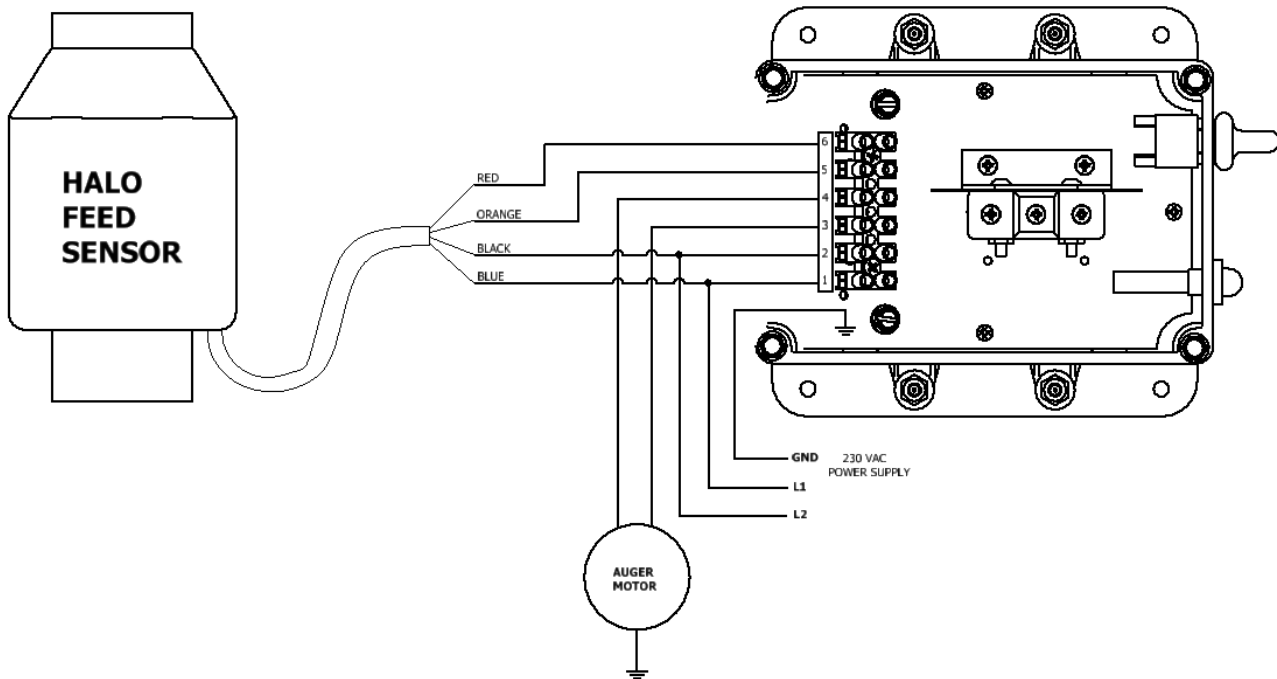
WITH EXTENSION GROW-FLEX™ AUGER USING TWO HS693 CONTROL UNITS



GSI SMART IR® SENSOR



HALO JR MAX FEED SENSOR



Hog Slat Limited Warranty

Hog Slat warrants products to be free from defects in material or workmanship for a period of twenty-four (24) months from the date of **original purchase**. Hog Slat will credit, repair, or replace, at its option any product deemed defective within this time period. Labor costs associated with the replacement or repair of the product are not covered by the Seller/Manufacturer.

Conditions and Limitations

1. The product must be installed by and operated in accordance with the instructions published by the **Seller/Manufacturer or Warranty will be void.**
2. Warranty is void if **all components** are not original equipment supplied by the **Seller/Manufacturer.**
3. This product must be purchased from and installed by an authorized retailer/distributor or certified representative thereof or the Warranty will be void.
4. Malfunctions or failure resulting from misuse, abuse, negligence, alteration, accident, or lack of proper maintenance shall not be considered defects under the Warranty.
5. This Warranty applies only to components/systems for the care of poultry and livestock. Other applications in industry or commerce are not covered by this Warranty.
6. This Warranty applies only to the Original Purchaser of the product.

The **Seller/Manufacturer** shall not be liable for any **Consequential or Special Damage** which any purchaser may suffer or claim to suffer as a result of any defect in the product. **“Consequential” or “Special Damages”** as used herein include, but are not limited to, lost or damaged products or goods, costs of transportation, lost sales, lost orders, lost income, increased overhead, labor and incidental costs and operational inefficiencies.

THIS WARRANTY CONSTITUTES THE SELLER/MANUFACTURER'S ENTIRE AND SOLE WARRANTY AND THIS MANUFACTURER EXPRESSLY DISCLAIMS ANY AND ALL OTHER WARRANTIES, INCLUDING, BUT NOT LIMITED TO, EXPRESS AND IMPLIED WARRANTIES AS TO MERCHANTABILITY, FITNESS FOR PARTICULAR PURPOSES SOLD AND DESCRIPTION OR QUALITY OF THE PRODUCT FURNISHED HEREUNDER.

Hog Slat Retailers/Distributors are not authorized to modify or extend the terms and conditions of this Warranty in any manner or to offer or grant any other warranties for GrowerSelect products in addition to those terms expressly stated above. An officer of Hog Slat must authorize any exceptions to this Warranty in writing. The Seller/Manufacturer reserves the right to change models and specifications at any time without notice or obligation to improve previous models.

This equipment must be installed in accordance with all State and Local Codes and applicable Regulations which should be followed in all cases. Authorities having jurisdiction should be consulted before installations are made.



Hog Slat, Inc.
PO Box 300
Newton Grove, NC 28366

Phone: (910) 594-0219
Fax: (910) 594-1392

www.hogslat.com

Copyright © 2016 by Hog Slat, Inc.

Part Number: HSMANUAL-112 Rev IR
Market – Hog & Poultry