



HST1000 Adult Turkey Feed Pan Assembly Instructions

General Assembly Notes:

Take special note of any Warnings or Safety Decals on the equipment and in manuals.

Always wear protective clothing and any applicable Personal Protective Equipment (Safety Glasses and/or Ear Plugs) when working with the equipment.

Discarded materials, equipment and boxes should be recycled in accordance with local and national codes.

Safety Instructions:

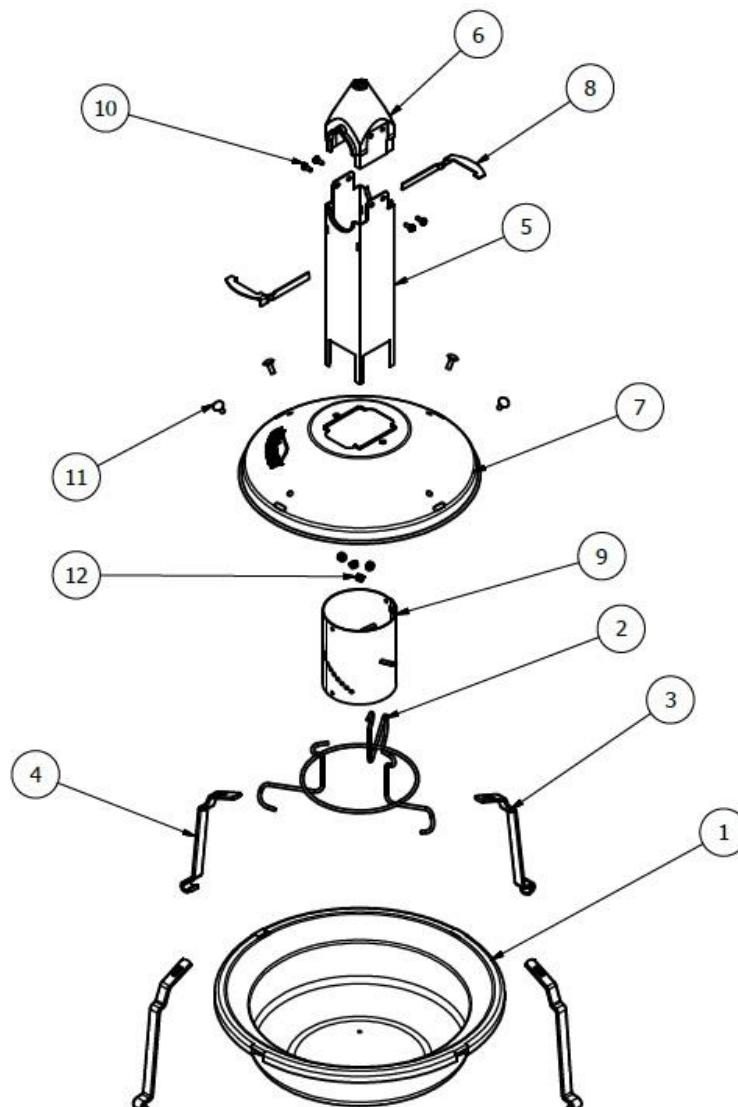
Read all safety messages in this manual and on equipment safety decals. Follow recommended precautions and safe operating practices.

Always keep safety decals in good condition and replace missing or damaged decals.

Tools Required:

- 1/4" Nut Driver
- 7/16" Socket

PARTS LIST			
ITEM	QTY	PART NUMBER	DESCRIPTION
1	1	HST1000-1	PAN, TURKEY FEEDER
2	1	HST1000-10	SUPPORT, ADJUSTMENT FLUE
3	3	HST1000-8	LEG, SUPPORT, FEEDER SHIELD
4	1	HST1000-14	LEG, SUPPORT, SWINGING
5	1	HST1000-7	FEED TUBE, WELDMENT-CUT
6	1	HST1000-4	TOP, DROP TUBE-TURKEY FEEDER
7	1	HST1000-13	SHIELD, TURKEY FEEDER
8	2	HST1000-9	BAR, LOCKING
9	1	HS07091707	RING, ADJUSTMENT, FLUE
10	4	11123226	Screw Sheet Metal #10-12x3/4" Hex-Slotted HWH Zinc Needle Pt
11	4	6070900	Bolt Carriage 1/4-20 X 5/8" Zinc
12	4	60680	Nut Lock Hex Nylon Insert 1/4-20 Zn



Assembly Instructions:

1. Insert swinging support leg (Item 4) in either side of the pan shield (Item 7) such that it will be on either side of the feed line and secure with a carriage bolt (Item 11) and lock nut (Item 12).



2. Attach remaining three legs (Item 3) to shield with carriage bolts (Item 11) and lock nuts (Item 12).



3. Hook the swinging support leg into the pan as shown below. Hook the opposite leg next. Pull the remaining two legs into place last. This should be a relatively tight fit.



4. Insert the flue adjustment ring (Item 9) into the flue adjustment support (Item 2) as shown.



5. Drop the feed tube (Item 5) into the assembly as shown.



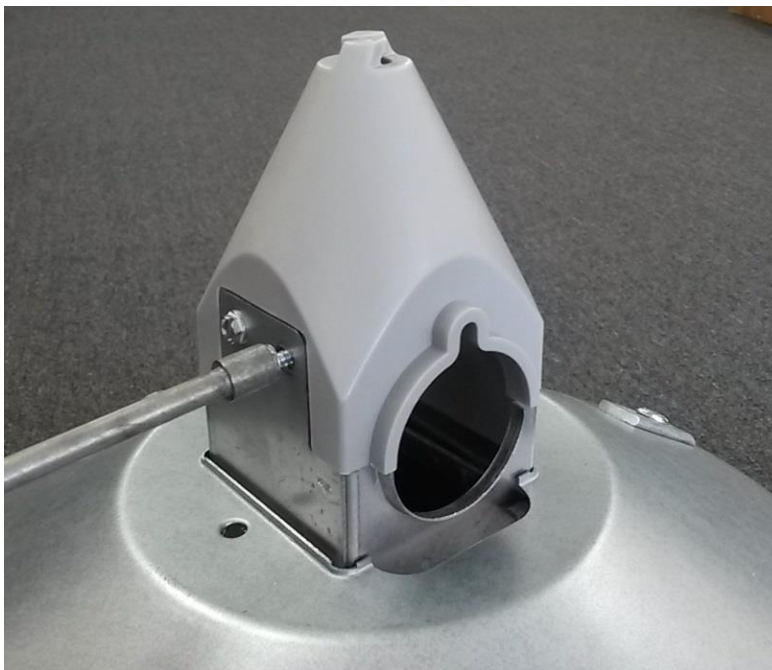
6. Insert the locking bars (Item 8) on each side of the feed tube as shown.



7. Place centering clip on feed line as shown below. Then snap on by firmly pressing on the clip. Note the orientation of the clip in relation to the tab on the feed line.



8. Hold the pan assembly up to the feed line by the feed tube (Item 5) and attach the drop tube top (Item 6) with four #10 screws (Item 10). DO NOT OVER TIGHTEN SCREWS!



This equipment must be installed in accordance with all State and Local Codes and applicable Regulations which should be followed in all cases. Authorities having jurisdiction should be consulted before installations are made.



**Hog Slat, Inc.
PO Box 300
Newton Grove, NC 28366**

**Phone: (910) 594-0219
Fax: (910) 594-1392**

www.hogslat.com

Copyright © 2017 by Hog Slat, Inc.

**Part Number: HSMANUAL-142 Rev A3
Market: Poultry**