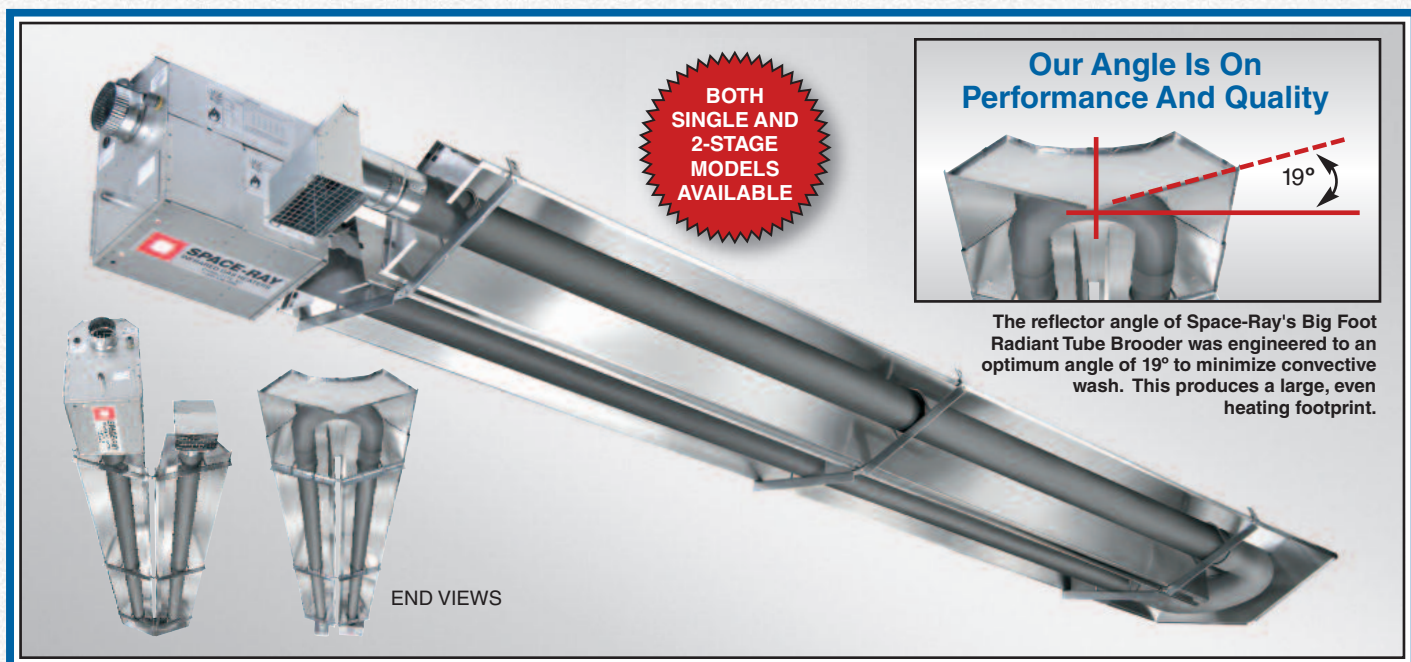
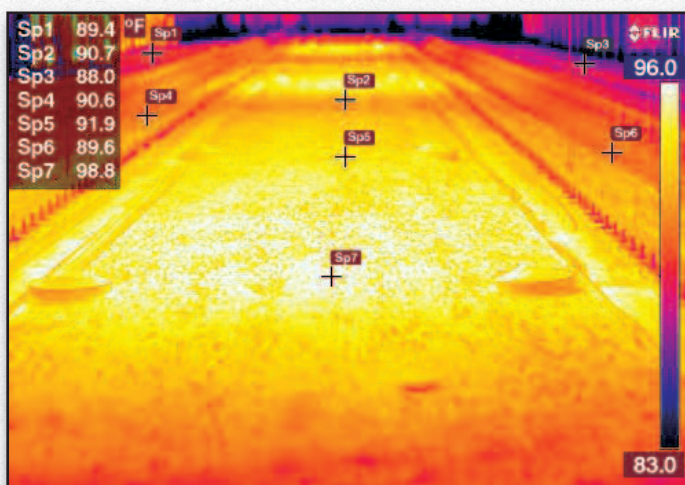


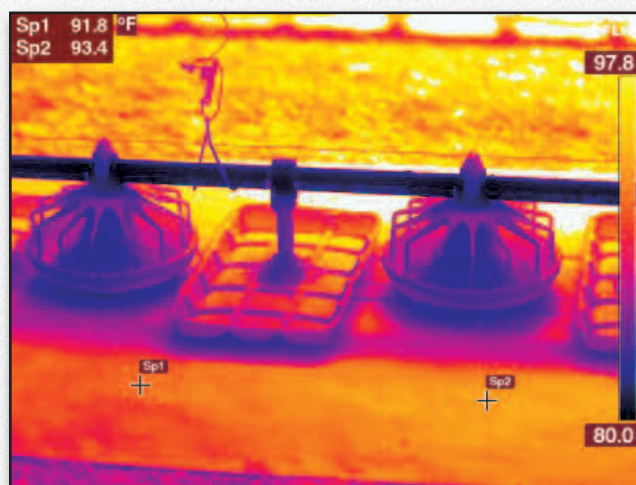
# Introducing Space-Ray's New **Big Foot™** Radiant Tube Brooder



## Infrared Photography Shows The **Big Foot™** Radiant Tube Brooder's Large, Even Heat Pattern At Litter Level



*Big Foot's unique design produces a large rectangular heat pattern*



*Big Foot's wide heat pattern keeps water and food areas warm for easy bird access*

## Space-Ray's New **Big Foot™** Radiant Tube Brooder Provides A Large, Even Heat Footprint, Thus Promoting Improved Bird Growth

**Big Foot** delivers a large, extra wide, rectangular heat pattern at litter level.

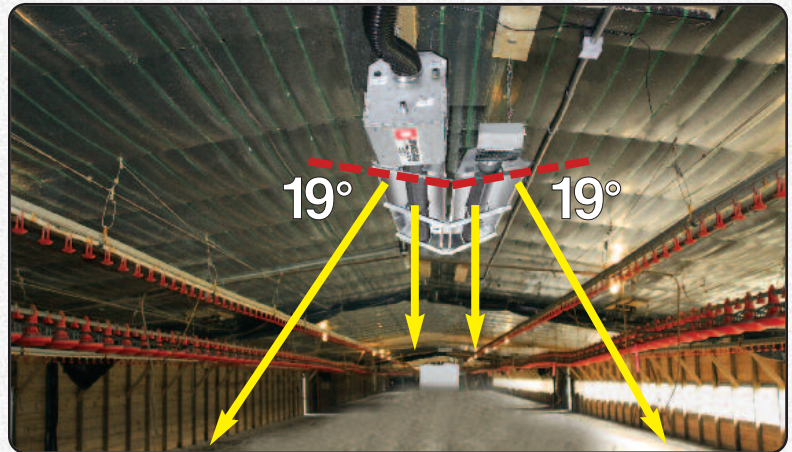
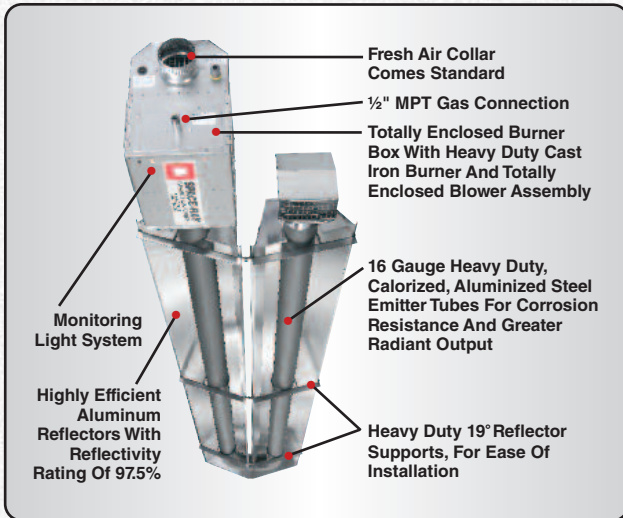
This means more uniform heat distribution for your poultry house. Better brooding conditions means more comfort for your birds.

- 19° Optimized Reflector Angle
- Better Radiant Throw For Even Temperature Distribution
- Low Clearances To Combustibles Above
- Allows Birds Warm Access to Food & Water
- Unique U-Bend Reflector Improves Heat Throw From End Of Tube
- Rectangular Pattern Conforms To Shape Of Poultry House
- 4" Diameter Tubes Create A Large Radiant Surface To Emit More Heat Over A Wide Area
- Each Unit Comes With Fresh Air Intake Kit, Exhaust Hood, Stainless Steel Flexible Gas Connector & A Pre Wired Electrical Connection.
- Each Unit Is Pre-assembled For Easy Installation
- Includes TISS™ (Tube Integrity Safety System) – Space-Ray's patented<sup>1</sup> innovative safety system. In the unlikely event of a tube failure, TISS™ has been designed to automatically shut off the heater, providing greater safety and peace of mind.
- 3-Year Limited Warranty On Complete Emitter Assembly

# Space-Ray's New Big Foot™ Radiant Tube Brooder

BIG FOOT – Provides The Largest Heat Emitting Surface Area And The Largest Heating Footprint In Its Market Segment<sup>1</sup>

**Unparalleled Design. Unparalleled Performance.**



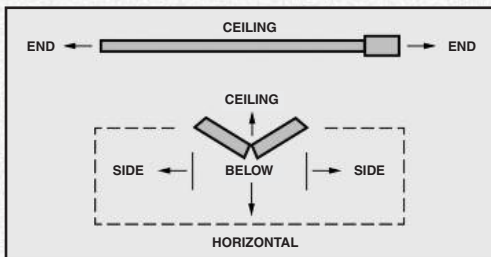
The 19° Angle Of The Reflectors Is Designed To Direct Energy Down Directly To Floor Level Where It's Needed

## TECHNICAL DATA

MODELS	SINGLE STAGE BTU/HR (Kw) INPUT	TWO STAGE		TOTAL EMITTER TUBE LENGTH	
		BTU/HR (Kw) HIGH INPUT	BTU/HR (Kw) LOW INPUT	15 FT	20 FT
PBF 60	60,000 (17.6 Kw)	60,000 (17.6 Kw)	39,000 (11.4Kw)	●	●
PBF 70	70,000 (20.5 Kw)	70,000 (20.5 Kw)	45,500 (13.3 Kw)	●	●
PBF 80	80,000 (23.4 Kw)	80,000 (23.4 Kw)	52,000 (15.2 Kw)		●
PBF 90	90,000 (26.4 Kw)	90,000 (26.4 Kw)	58,500 (17.1 Kw)		●

GAS TYPE	CONTROL OPTION		BURNER PRESSURE	SUPPLY PRESSURE		VOLTAGE	AMPS	IGNITION TYPE
	SINGLE STAGE	TWO STAGE		MIN	MAX			
NATURAL	N5	N7	3.5" W.C. 8.7 mbar	5" W.C. 12.5 mbar	14" W.C. 34.9 mbar	120 VAC 60 HZ	1.8	DIRECT SPARK
PROPANE	L5	L7	10" W.C. 24.9 mbar	11" W.C. 27.4 mbar	14" W.C. 34.9 mbar			

## MINIMUM CLEARANCE TO COMBUSTIBLES



MODEL NO.	SIDE	CEILING*	BELOW	END
PBF 60	36" / 91 cm	12" / 30 cm	69" / 175 cm	32" / 81 cm
PBF 70	36" / 91 cm	12" / 30 cm	69" / 175 cm	32" / 81 cm
PBF 80	36" / 91 cm	12" / 30 cm	69" / 175 cm	32" / 81 cm
PBF 90	36" / 91 cm	12" / 30 cm	69" / 175 cm	32" / 81 cm

**FOR YOUR SAFETY** – OPERATE SPACE-RAY HEATERS WITH PROPER CARE AND OBSERVE ALL SAFETY PRECAUTIONS. Installation and service must be performed by a licensed contractor. The installation must conform to local codes. In the absence of local codes, the installation must conform with the National Fuel Gas Code ANSI Z223.1 (latest edition also known as NFPA 54) or CGA B 149 installation codes (latest edition). These codes are available from the National Fire Protection Association, Inc., Batterymarch Park, Quincy, MA02269 (www.nfpa.org) or contact CSA at 1-800-463-6727.



**SPACE-RAY®**

A Division of Gas-Fired Products, Inc.  
 305 Doggett St. PO Box 36485, Charlotte, NC 28236  
 Toll Free 1-800-849-7311 (704)372-3488 FAX (704)332-5843  
 Email: info@spaceray.com Web: www.spaceray.com  
 Plants in Charlotte, NC and Ipswich, England



DISTRIBUTED BY \_\_\_\_\_