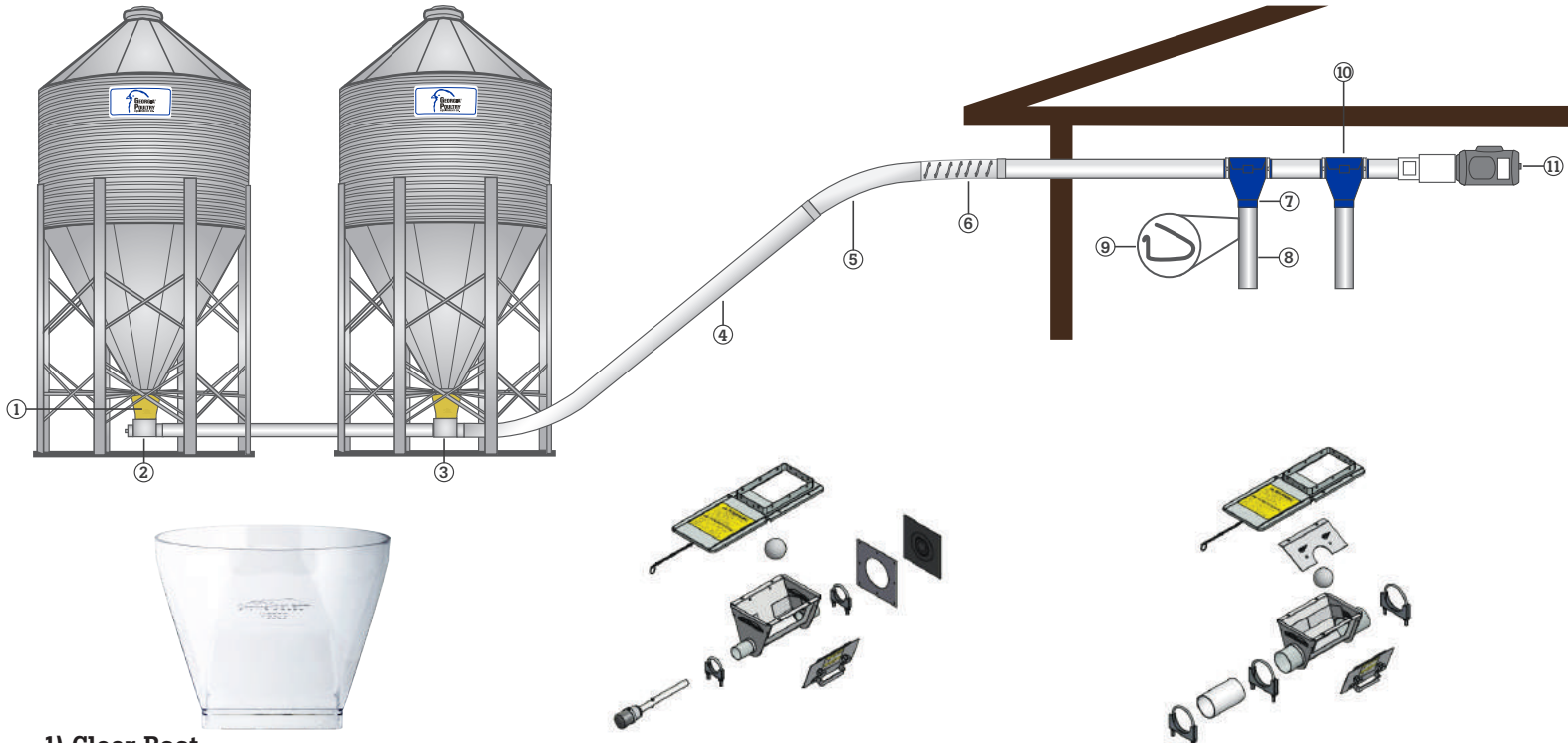




We've put 45 years of building, installing, and servicing livestock equipment into every GrowerSELECT Feed System and Feed Bin. Rugged high service factor motors, structurally heavier feed bins, and feed system components built to last longer with the industry's best warranty backed and serviced by local stores. Feed Systems built for your farm.



1) Clear Boot

A simple glance will alert you to potential problems with feed delivery. Injection molded of impact-resistant clear polycarbonate. The GrowerSELECT replacement boot fits any 16" bin opening.

#HS525Straight Clear upper boot

2) Single Unloader with Anchor Bearings and Transfer Plate

#HS520KITModel 75
#HS557KITModel 90

3) Single Tandem Unloader with Transfer Plate

#HS520TKITModel 75
#HS557TKITModel 90



4) 10' Straight PVC Tube

#HSAT75-SModel 75, 3" OD
#HSAT90-SModel 90, 3-1/2" OD



5) 45° PVC Elbows, 5' Radius

#HSAT75-45Model 75
#HSAT90-45Model 90

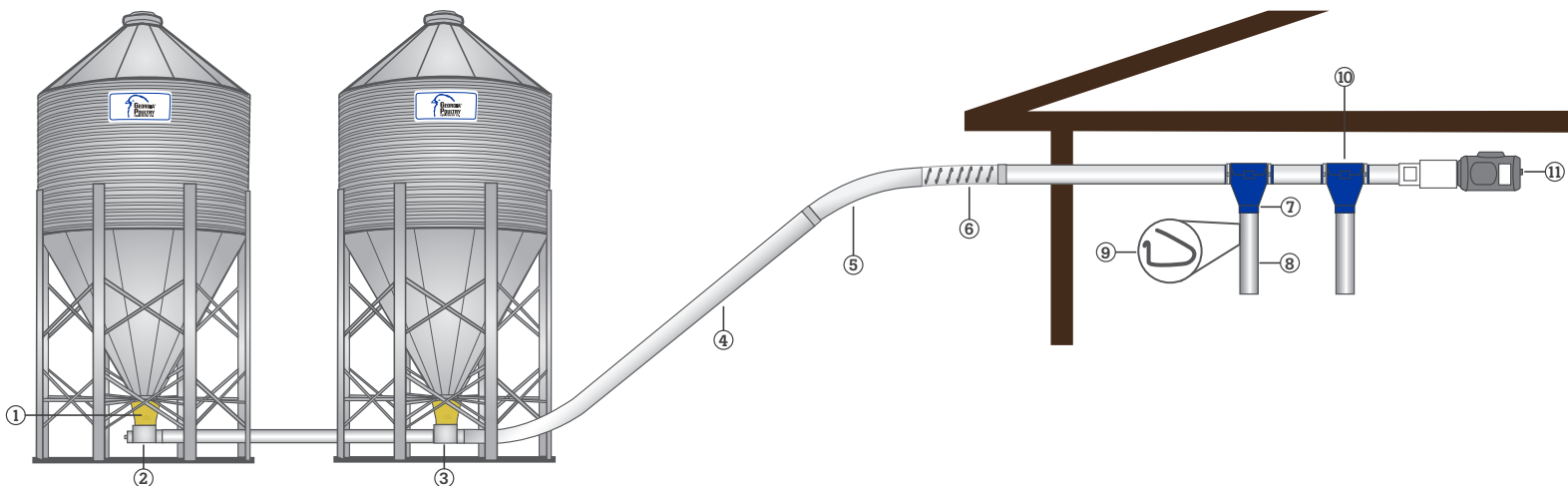


6) Grow-Flex™ Auger

Our innovative manufacturing process forges a stronger, more durable auger with superior flexing and breaking strength that outperforms standard augers.

#HSFA-75Model 75
#HSFA-90Model 90

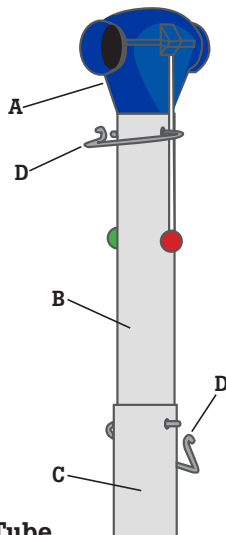




7) Drop Adaptors

- 100% Feed Drop Out
- Secure hose clamp connections with overlapping seams to prevent water entry.
- Fits existing brands of feed tubes.

#HS675.....M75/300
#HS690.....M90/350



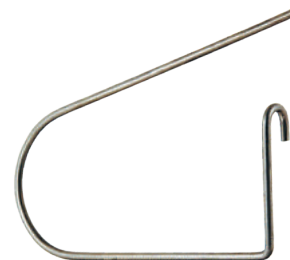
8) Drop Tube

Drop tube part number combinations that make up the telescoping drops.

A - Drop Tube Adaptor
B - Top Tube
C - Bottom Tube
D - Clips

MODEL	A	B	C	D	SINGLE TUBE
55	HS655	HSDT005	HSDT003	60638	HSDT005
75	HS675	HSDT005	HSDT003	60638	HSDT005
90	HS690	HSDT001	HSDT006	60638	HSDT001
HR	HS690	HSDT001	HSDT006	60638	HSDT001
Control Unit		HSDT001	HSDT006	60638	HSDT001

#HSDT006.....4.187" ID x 4.375" OD x 12'



9) Wire Pin

#60638.....4" for attaching drop tubes



10) Control Unit

230 volt unit for all models. Includes drop cone.

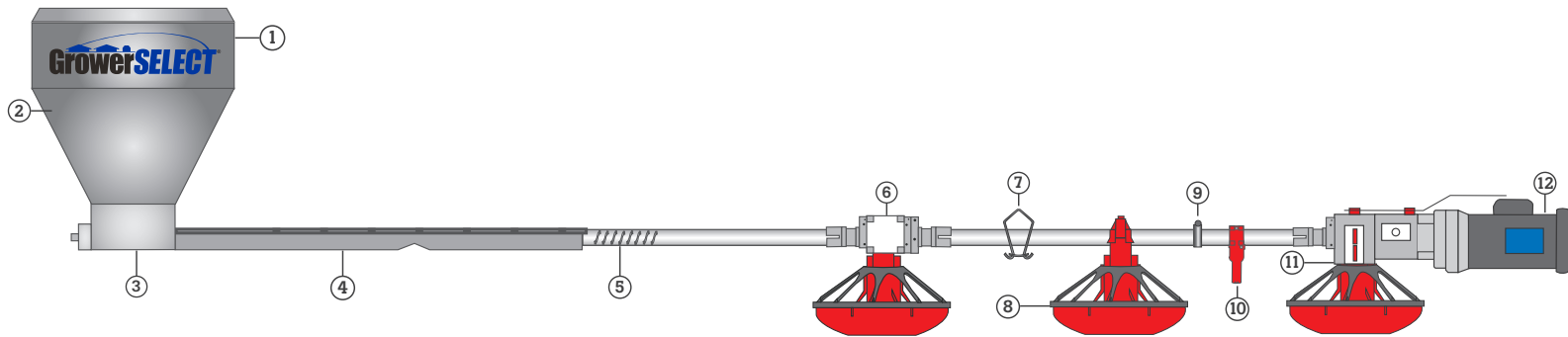
#HS593.....Control Unit w/o Relay
#HS693...Control Unit w/ Relay for Proximity Switches



11) Direct Drive Power Units, 352 RPM

Complete with motor, gear heads, pinion, 36" pigtail cord and 15 oz. bottle of gear oil. All units are 115/208-230 volts.

#HS9022D2.....3/4 Hp Model 75 & 90
#HS9023D2.....1 Hp Model 75 & 90



1) Feed Line Hoppers

20 ga galvanized feed hopper with Dual Point suspension mounted at right angle to prevent feedline sway. Can also be mounted with top single point suspension.

#HS569A-120	120 lb
#HS569A-200	200 lb
#HS569A-300	300 lb

2) Hopper Level Control Switch

Fully enclosed "normally closed" switch eliminates shock hazard. Switch features adjustable arm to set feed depth and removable feed shield to adapt to different applications.

#HS597	Prewired "Normally Closed"
	110/220 Volt, 20 Amps max

3) Unloader Kits

Unloader kits for feed line hoppers, complete with cannonballs, anchor bearings, and hardware.

#HS532KIT	Single Unloader Kit
#HS533KIT	Double Unloader Kit



4) Feed Line Tube

Constructed of G90, rolled-formed galvanized steel, the GrowerSELECT® feedline tube is a standard 1.75" diameter. The seam features additional crimps per inch for additional strength and a deep 2" long swaged bell mouth.

#HSPFT175-409	1.75 4 On 9
#HSPFT175-410	1.75 4 On 10
#HSPFT175-809	1.75 8 On 9
#HSPFT175-810	1.75 8 On 10



5) Grow-Flex™ Auger

Our innovative manufacturing process forges a stronger, more durable auger with superior flexing and breaking strength that outperforms standard augers.

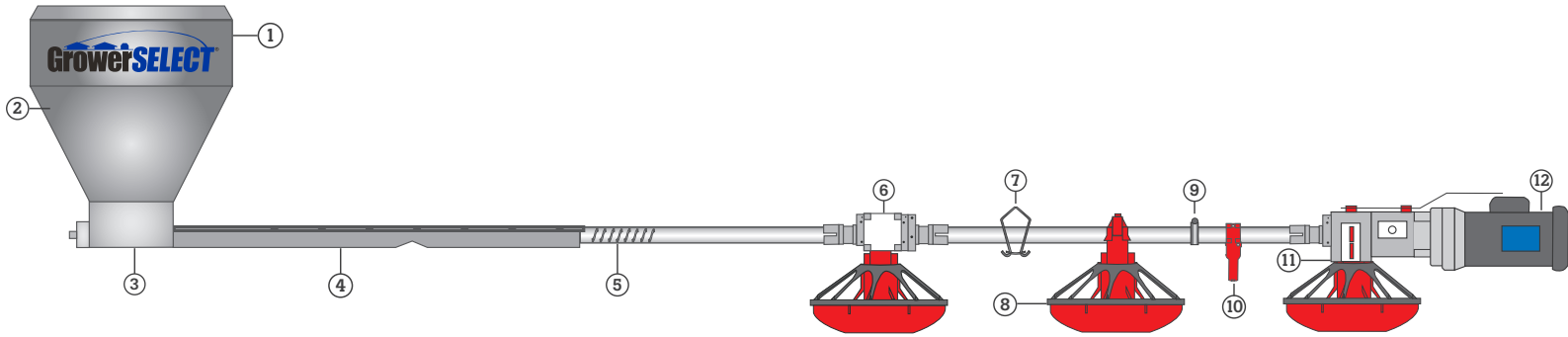
#HSFA-44	Flexible Auger 44mm
----------------	---------------------



6) Intermediate Control Pan

Mid line control pan complete with 10' pigtail cord, 18" cord protector and 8 spoke grill. 115/230 volts with 20 amp micro switch, CSA Certified. Available as eight spoke grill only.

#HS8250	Intermediate Control Pan
---------------	--------------------------



7) Feed Line Hanger

Unloader kits for feed line hoppers, complete with cannonballs, anchor bearings, and hardware.

#HSH022Hanger Bracket
#HSH023Hanger Bracket



8) Classic Flood Feed Pan

An improved version of an industry staple, the Classic Flood pan feeder is constructed of UV stabilized polypropylene without the use of CADMIUM or LEAD. Flood windows increase available feed in the pans to attract chicks and reinforced wear areas increase pan life.

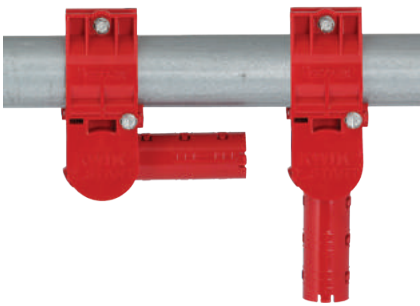
#HS8000Classic Flood Feed Pan



9) Feed Line Clamp

For 1.75" pipe

#HSH024Hanger Clamp



10) Kwik-Start

The only chick starter designed to allow complete feed shut off when using cone style sleeves. Choose from optional sleeves.

#HS577Kwik Start only
#HS578LCone Sleeve w/ Lock
#HS577-3253-1/4" Sleeve
#HS577-6006" Sleeve



11) End Control Pan

Rugged, trouble-free design utilizes a simple paddle switch to control feed lines. Complete with 10' pigtail cord, 18" cord protector, water tight connections and 8 spoke grill. 115/230 Volts with 20 amp micro switch. CSA Certified. Available as eight spoke grill only.

#HS8500End Control Pan



12) Drive Units

Complete with 115/230v motor, 352-rpm gear head, pinion, driver connection kit, gear oil and hardware. Includes 36" pigtail cord.

#HS9020D1-P1/3 Hp
#HS9021D1-P1/2 Hp
#HS9022D1-P3/4 Hp